

the world of music

sounds of intent

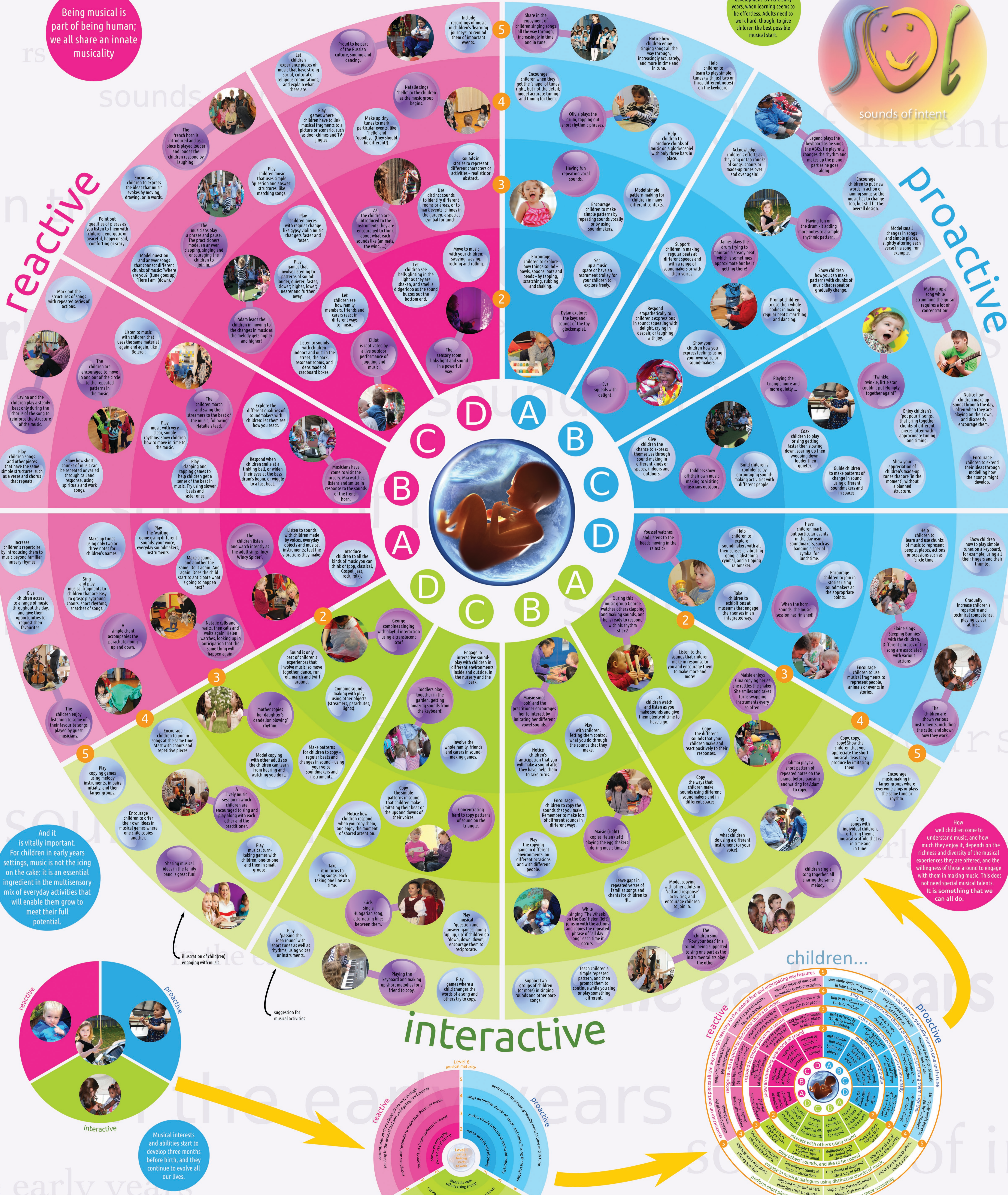
in the early years

Being musical is part of being human; we all share an innate musicality

However, the most rapid period of development is in the early years, when learning seems to be effortless. Adults need to work hard, though, to give children the best possible musical start.



sounds of intent



Reactive

Proactive

interactive

children...

And it is vitally important. For children in early years settings, music is not the icing on the cake: it is an essential ingredient in the multisensory mix of everyday activities that will enable them to grow to meet their full potential.

How well children come to understand music, and how much they enjoy it, depends on the richness and diversity of the musical experiences they are offered, and the willingness of those around to engage with them in making music. This does not need special musical talents. It is something that we can all do.

Musical interests and abilities start to develop three months before birth, and they continue to evolve all our lives.

copyright © 2015 Adam Ockelford
contact: a.ockelford@roehampton.ac.uk

designed by Evangelos Himonides
contact: e.himonides@ucl.ac.uk

www.eysoi.org